



| ScienceFlix Downloadable Icons for a MAC | ScienceFlix Downloadable Icons for a PC |

ScienceFlix Desktop Icons

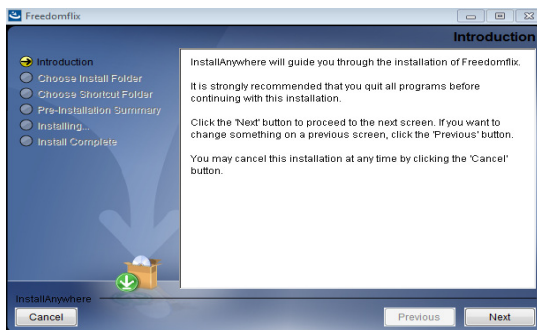


Windows Desktop Icons

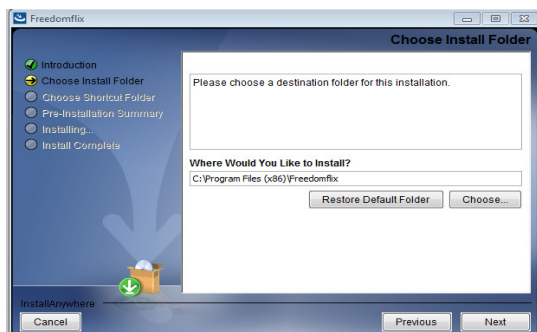
Installing the *ScienceFlix* Desktop icon on your Windows Desktop is a simple operation. It requires that you run a self-executing file for each product you'd like, which will place an icon on your desktop for that product. Click [here](#) to open an Adobe Acrobat version of these instructions.

To download the *Grolier Online* Shortcut for use with Windows XP SP3 Professional, Windows Vista Business, Windows 7 Professional:

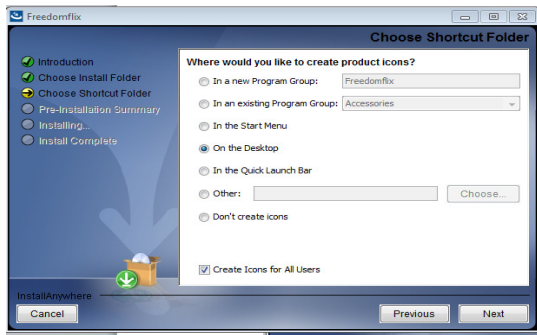
1. Click on the icon for the product you'd like to create a desktop shortcut for. This will download an executable file.
2. A warning may pop up, asking if you want to download this. Select Yes.
3. This will bring up the status window while it downloads the installer.
4. Once the installer is ready you should see a box, opening to the Introduction page.



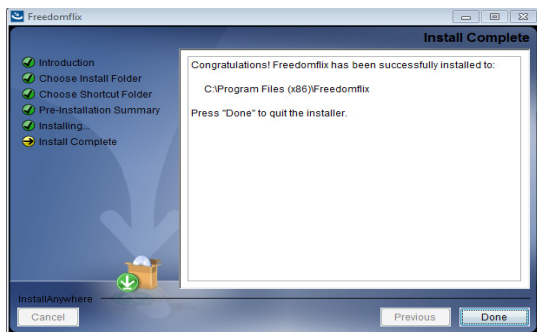
5. Select Next.
6. You will now be brought to the Choose Install Folder screen.



7. Select Next.
8. You should be brought to the Choose Shortcut Folder screen.



9. The installer is automatically set to put the shortcut on the Desktop. You can change the location, if desired.
10. Select Next.
11. You will be brought to the Pre-Installation Summary screen which provides data about the icon, selected location, size, etc.
12. Select Next.
13. This next screen will install the desktop icon. It only takes a few seconds.
14. Once installed, this screen will appear:



15. To access the product double click on the icon.

[BACK](#) | [CLOSE](#)

™ & © Scholastic Inc. All Rights Reserved.